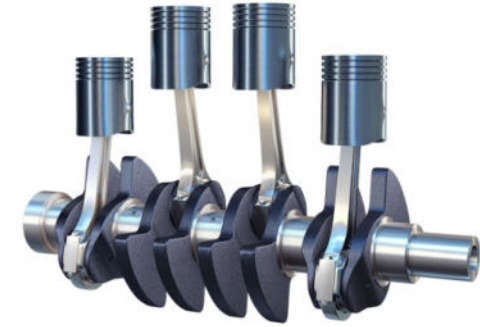
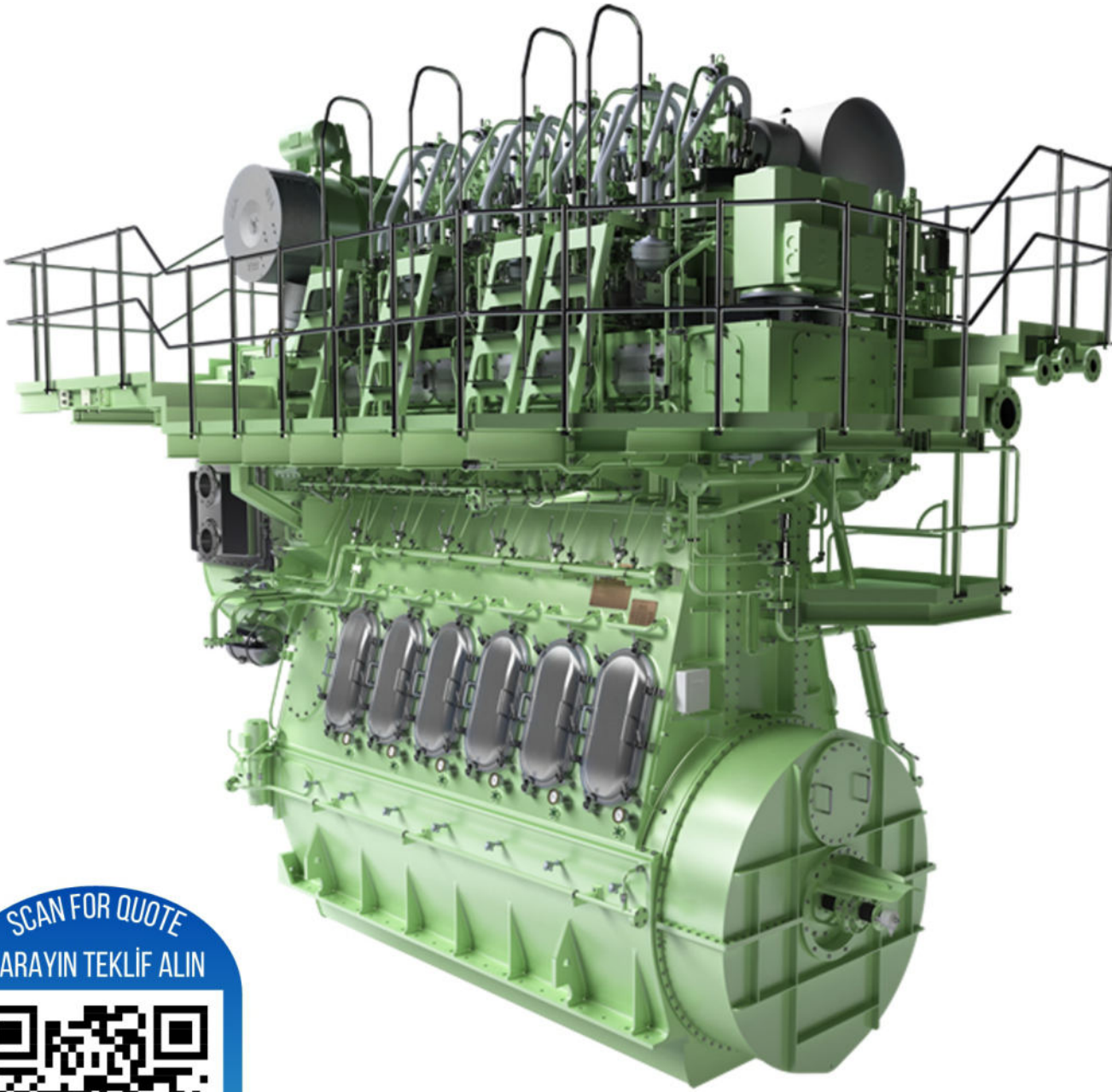




MECPARTNER

NORDMEC

ENGINEERING SERVICES



ESTABLISHED IN JUNE 2016 IN ISTANBUL

- Situated in one location
- Main office & Workshop in Tuzla
- Serves Turkish ship owners, management companies, foreign ships in transit, shipyards and stationary power plants
- 27 technicians
- 3 engineers with MAN Diesel and ABB background

SCAN FOR QUOTE
TARAYIN TEKLİF ALIN





SCOPE

- Repair and trouble shooting for 2 stroke and 4 stroke engines for marine and stationary applications
- Planned maintenance service
- Inspection and supervision
- Major parts recondition and overhaul
- Heavy repairs such as crankshaft and engine block replacement
- Cylinder Lub. System checking & O/H
- Pneumatic control systems
- Performance measurement & evaluations

1200 m^2

STORAGE AREA

Borwerk machine

Lathe machine

Vertical Lathe Machine

Robot Welding machine

Different capacity hydraulic presses

Heating oven used for recondition

Vertical & Horizontal Milling Machine

CNC Rectifier(Grinding) Machine

450 m^2

WORKSHOP

6 meters height

suitable for big
engine parts operation



DETAILS AND SKILLS OF OUR EMPLOYEES

- Total 27 employee
- 1 Head of Technician
- 4 senior technicians
- 22 technicians
- Common points and skills are as follows;
- Experience on repair, maintenance, commissioning
- Basic communication skills in English
- Ability to travel and accommodate world wide

OUR MACHINE PARK

LASER
CLADDING



WELDING
ROBOT



SURFACE
MILLING
MACHINE



VERTICAL
LATHE
MACHINE



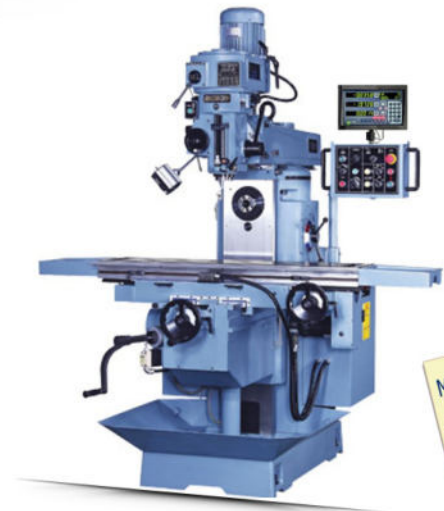
BORWERK
MACHINE



GMT
LATHE
MACHINE



LATHE
MACHINE



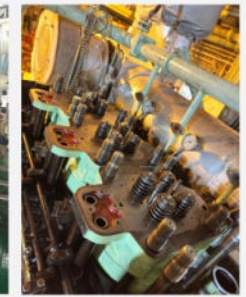
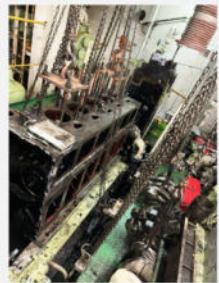
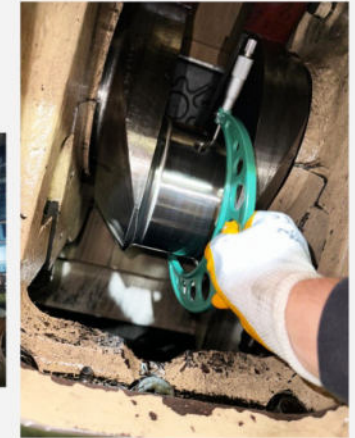
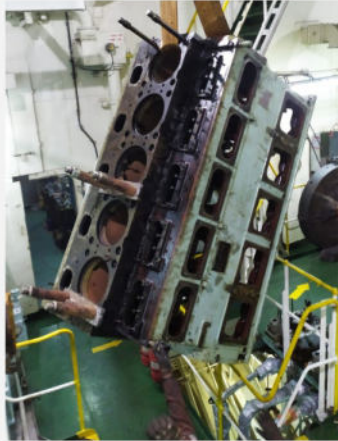
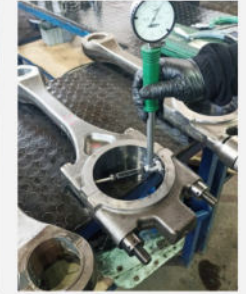
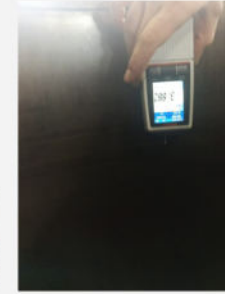
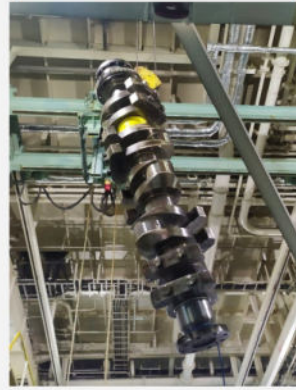
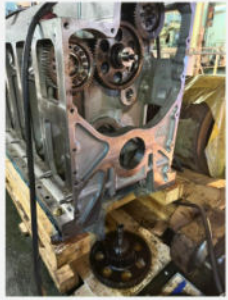
MILLING
MACHINE



SOME OF OUR REFERENCES

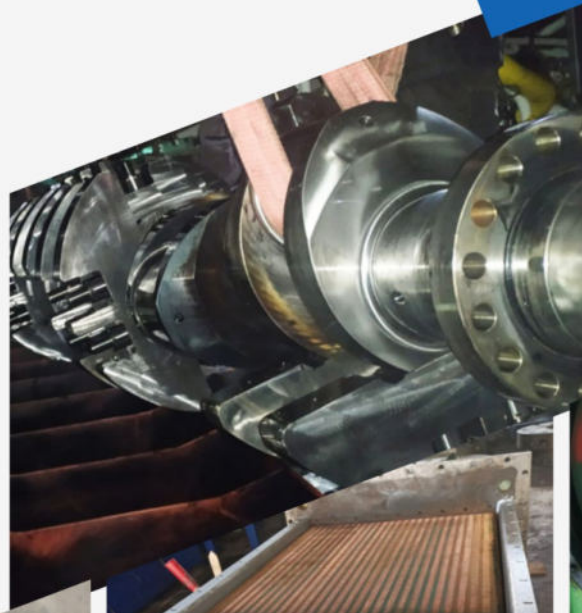
- LISNAVE SHIPYARDS S.A. / PORTUGAL
 - WINKONG MARINE / CHINA
 - MSC MEDLOG / TURKEY / ITALY
- OFFICINE MECCANICHE NAVALI / ITALY
 - BENETECH SHIPPING / GREECE
 - PRIME SHIPPING / GREECE
- MARDEXS DANMARK / DENMARK
 - GNTMC / LIBYA
- UNION MARITIME / SINGAPORE
- ACTIVE SHIPPING / SINGAPORE
- JUNMA SERVICES PTE / SINGAPORE
 - ORCA SHIPPING / ROMANIA
- BERNHARD SCHULTE SHIP MANAGEMENT
 - ROG SHIP REPAIR / NETHERLANDS
 - NORDEN SHIPYARD / HOLLAND

OUR EXPERIENCES



OUR 4-STROKE ENGINE ACTIVITIES

- General Maintenance
- Cylinder head, Liner, Piston, Bearings
- Crankshaft replacement
- Vibration Damper maintenance
- Valve and seat machining
- Recondition
- Crank shaft machining.
- Cooler ultrasonic / chemical cleaning
- Troubleshooting



**WE SERVE ALL
OVER THE WORLD**

4 STROKE
machines with our
experienced staff

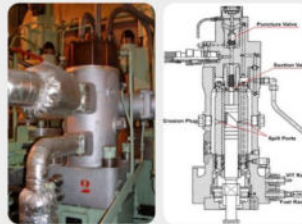
MC ENGINES SERVICES

Overhaul intervals and expected service life of engine components on two stroke low speed MC engines has been changed according to engine running hours and fuel type. We will be pleased to give you the best service with our best price quote according to your service requests.

FUEL PUMPS

Fuel pump overhaul supervising

- Damaged guide bush recondition
- Troubleshooting
- Lead measurement



PISTON ROD

- Light machining.
- Machining on special lathe grinding machine
- Inspection and measurement



PISTON HEAD

- Measurement and inspection
- Pverhaul
- Piston head skirt (bronz) recondition



CYLINDER LINER

- Inspection
- Measurement
- Overhaul

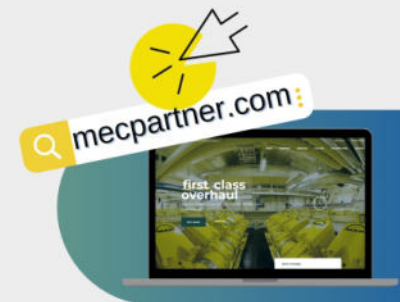


CYLINDER COVER & EXHAUS VALVE

Inspection
Overhaul
Pressure test



OVER
8
YEARS



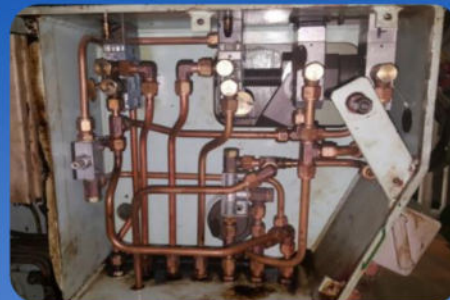
PNEUMATIC SYSTEM

“

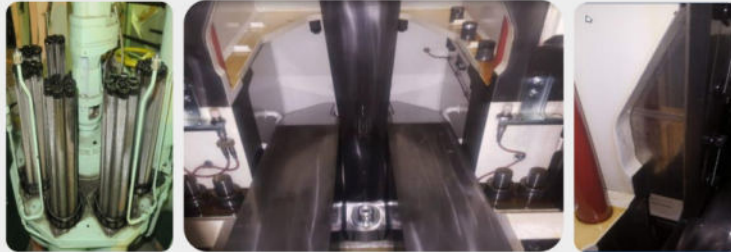
- An examination of various marine incidents has shown that one of the main causes of problems with starting and manoeuvring systems is insufficient maintenance of the pneumatic control system on the engine
- In general, suppliers of pneumatic components recommend renewing non-metallic parts and O-rings in the various valves every second year
- In general, suppliers of pneumatic components recommend renewing non-metallic parts and O-rings in the various valves every second year
- During the overhaul of the various valves, actuators, etc., as recommended. The work is usually limited to internal cleaning of the components and replacement of the non-metallic parts as necessary
- After maintenance of the each valve, we assemble them into the Manoeuvring System after "Functioning Test" We can provide all the required spare parts for the Pneumatic Manoeuvring System Overhaul
- Promechatronic Engineering can assist you for Pneumatic Manoeuvring System Overhaul for your MC, MC-C, ME-B and ME-C engines in any location around the world.
- For further information, please contact us

”

**LET'S KEEP
YOUR
VESSEL IN
TROUBLE
FREE
SERVICE**



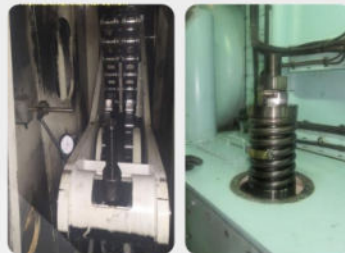
CRANKCASE INSPECTION & BEARING MEASUREMENT



BEARING OVERHAUL & INSPECTION & MAINTENANC

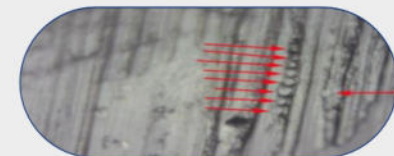
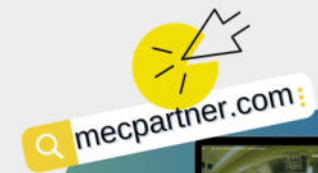


CHAIN & MOMENT COMPENSATOR ADJUSTMENT



OVER
8
YEARS

ON BOARD
REPLICA
ANALYS
CAT & FINE
INVESTIGATION



ALPHA LUBRICATOR SYSTEM

WE WILL BE ASSISTING YOU TO CATCH THE BEST CYLINDER CONDITION

During the Alpha Lubricator 5 Years Maintenance Service, below parts are replaced;

- a) Accumulators
- b) Solenoid valves
- c) Non-return valves
- d) Feedback sensors
- e) Sealings and O-rings
- f) Filter inserts
- g) Coupling Spiders

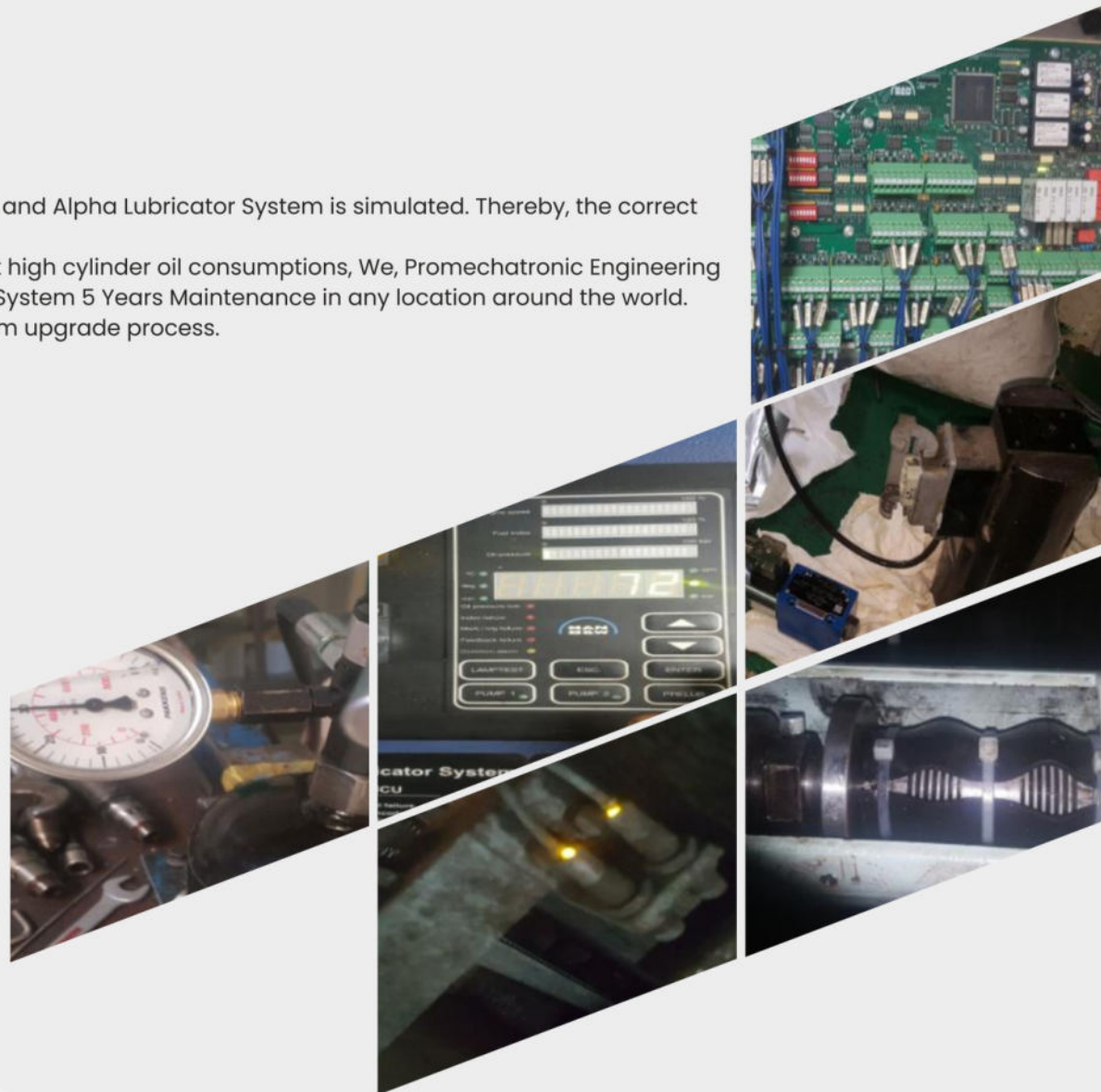
After maintenance, System Health Check is to be performed and Alpha Lubricator System is simulated. Thereby, the correct amount of cylinder oil injection is established.

In order to keep the optimum cylinder condition and prevent high cylinder oil consumptions, We, Promechatronic Engineering provide reliable and flexible service for the Alpha Lubricator System 5 Years Maintenance in any location around the world.

In addition, we are able to perform the alpha lubricant system upgrade process.

- MCU replacement and software upgrade.
- Lubricator modification.
- Feed rate adjustment.
- System simulation.
- Angle encoder adjustment.
- Sensor adjustment.

OVER
8
YEARS

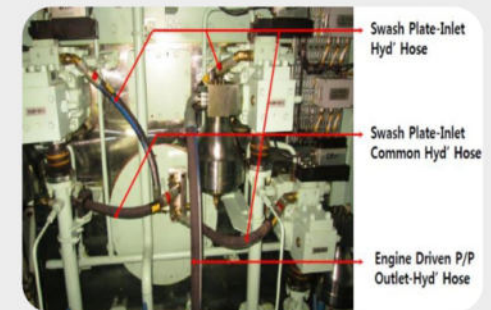
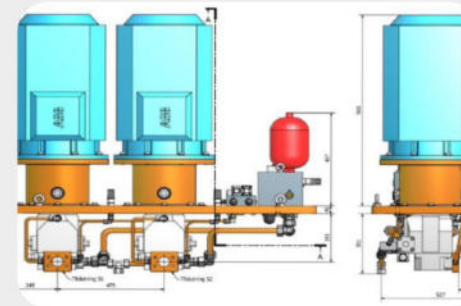
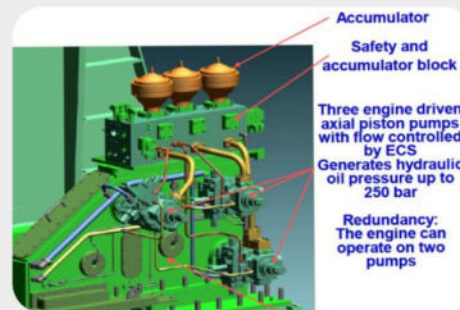


ME-B & ME-C ENGINES SERVICES

As MEC Partner, we are able to provide the necessary services to monitor and update the ME-specific components of MAN B&W two-stroke engines and perform all maintenance with our experienced team. All our engineers have at least 5 years MAN experience and are highly specialized in their fields.

Electric Motors for Electrically Driven Pumps

For information about the expected lifetime of electric motors and bearings, please consult the makers' guidelines. Electric motors are typically defined for a lifetime of 32,000 running hours (R/H).



Hydraulic Pumps Jobs

- Hydraulic pumps : 32,000 R/H (Please notify 5 weeks in advance for spare parts preparation.)
- Proportional valves/control valves replacement and function test: 20,000 R/H.
- Hydraulic hose replacement 5 year
- HPS Upgrade from HS3 to HS4
- Troubleshooting

OVER
8
YEARS

HYDRAULIC CYLINDER UNIT

Fuel oil pressure booster and Exhaust actuator maintenance

Fuel Pumps

- Replacement of suction valve: 32,000 R/H or every five year.
- Overhaul of complete fuel oil pressure booster (Inspection, seal replacement)
- Troubleshooting



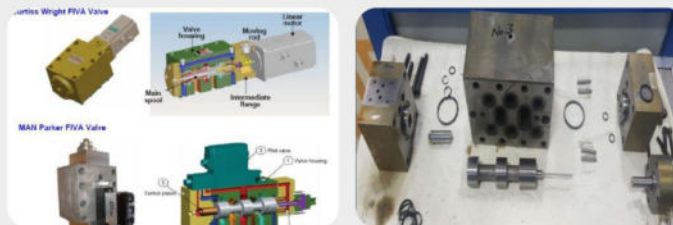
Exhaust Actuators

- All parts inspection and replacement of seals

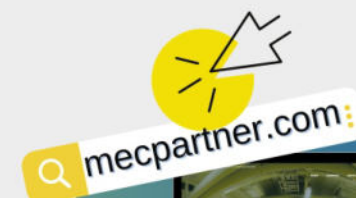


Hydraulic control valves FIVA/ELVA/ELFI

- FIVA valve overhaul.
- FIVA calibration, inductive sensor adjustment, test (on board)
- System test.
- FIVA Conversion (From Curtis Wright to MAN)
- Troubleshooting



OVER
8 YEARS





Alpha Lubricators

- Solenoid replacement
- Non-return valve replacement
- Seals Replacement
- Feedback sensors replacement
- Function Test
- Troubleshooting



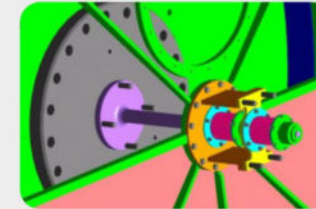
Accumulators

- Replacement of diaphragm
- Re-charge and test



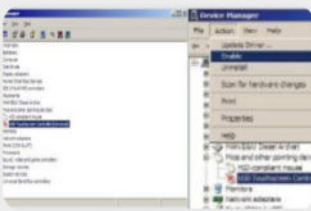
Tacho System Inspection and Adjustment

- System check, adjustment



MOP Replacement and Software Upgrade

- MOP replacement spaff and software upgrade according to engine specification



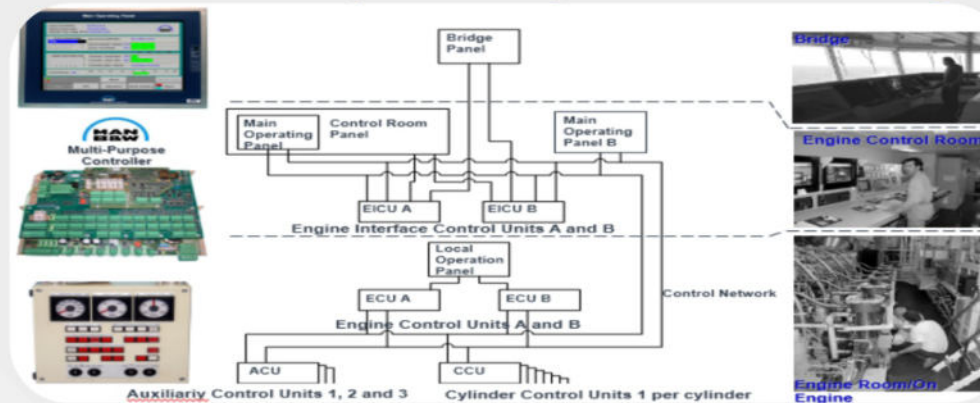
Pneumatic System Maintenance

- All pneumatic valve overhaul
- Simulation Before installation



System Health Check

Telgraph calibration & cables inspection & System simulation & signal inspection



OVER
8 YEARS

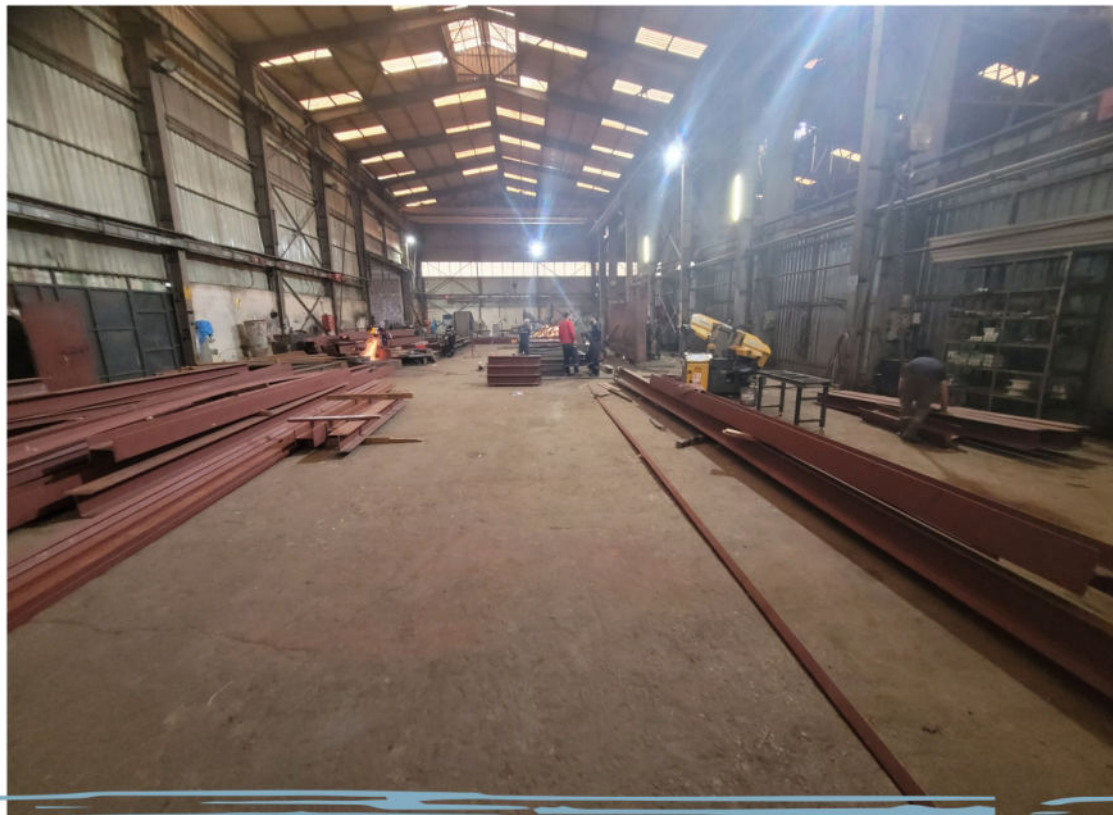


+90 216 504 61 00
+90 541 411 15 81
technic@mecpartner.com
www.mecpartner.com
Orhanlı Süt Sk. No:6
Deri Osb/Tuzla/İstanbul
MECPARTNER

NORDMEC

ENGINEERING SERVICES

SISTER COMPANY OF MECPARTNER



1200 m²

CLOSED WORKSHOP AREA

Welding Machines

Sheet Metal Roller

Profile Bender

Different Capacity Hydraulic
Presses

OUR FIELD OF ACTIVITY

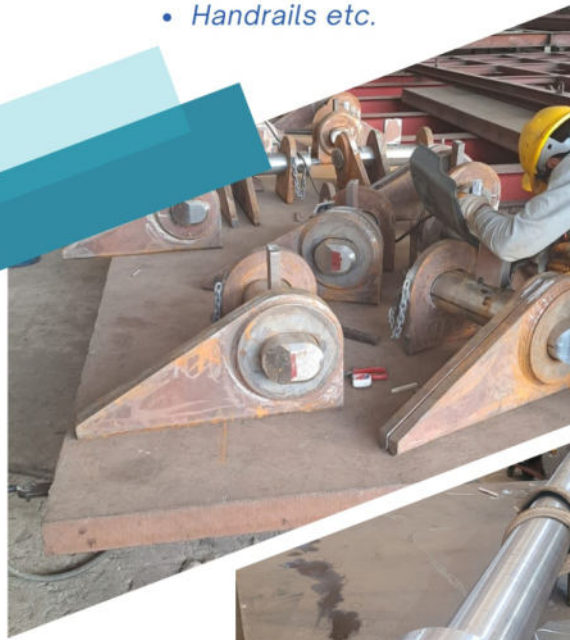
- Manufacturing of Ship Equipments
- Repairing of Steel Equipments
- Piping Works
- Crane etc. repairing and manufacturings
- Piston Cylinder Manufacturings
- Stainless Steel Manufacturings

DETAILS AND SKILLS OF OUR EMPLOYEES

- Total +20 employee
- 1 Mechanical Engineer
- 1 Technician
- Basic communication skills in English
- Ability to travel and accomodate world wide

SOME OF SHIP EQUIPMENTS MANUFACTURINGS

- Chain Locking Systems,
- Rudders,
- All Type Manholes,
- Platforms / Ramps,
- Vertical Ladders,
- Handrails etc.



**WE SERVE ALL
OVER THE WORLD**

PIPNG WORKS



HYDRAULIC PISTON CYLINDERS

As Nordmec Engineering, we provide hydraulic piston maintenance services and we manufacture cylinders with both stainless steel or carbon steel materials.



SHAFT AND RUDDER SYSTEM MANUFACTURINGS



GET IN TOUCH
FOR QUOTE

SOME OF INDUSTRIAL MANUFACTURINGS

- Chain Locking Systems,
- Rudders,
- All Type Manholes,
- Platforms / Ramps,
- Vertical Ladders,
- Handrails etc.



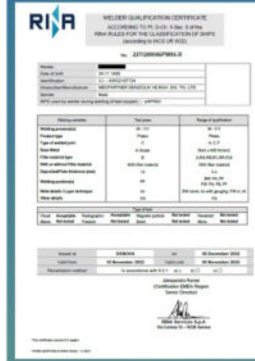
**WE SERVE ALL
OVER THE WORLD**

KARPOWERSHIP



SOME OF OUR REFERENCES

- KARPOWERSHIP
- LIMAK HOLDING
- İÇDAŞ SHIPYARD
- IC HOLDING
- İZMİR DEMİR ÇELİK SANAYİ A.Ş.
- KROMAN ÇELİK A.Ş.
- KARDEMİR ÇELİK A.Ş.
- BAŞTUĞ METALURJİ SANAYİ A.Ş.



+90 216 504 61 00
+90 537 440 88 98
info@nordmec.com.tr
www.nordmec.com.tr
Evliya Çelebi Mah. Şinasi
Dural Cad. Tuzla Ticaret
Merkezi B Blok Daire: 4,
34944 Tuzla / İstanbul



MECPARTNER

NORDMEC

ENGINEERING SERVICES